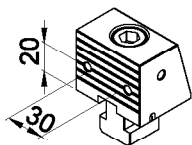
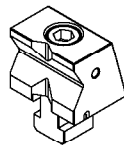


Multi-grip vices 50 – 100 spare parts

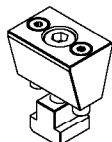
MORSE MULTIPRESA  
MULTI-GRIP VICES



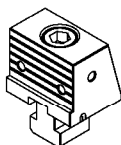
**Ganascia fissa 50**  
completa di viti e tassello  
per tipo "A" - "B" - "C"  
cod. : J 97 051



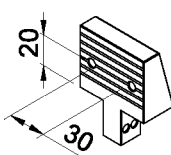
**Ganascia fissa 50 a "V"** per tondi  
completa di viti e tassello  
per tipo "F"  
cod. : J 97 059



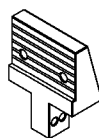
**Cuneo 50**  
completo di viti e tassello  
per tipo "A" - "C"  
cod. : J 97 052



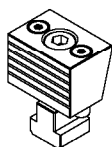
**Ganascia fissa 50 con scalini**  
completa di viti e tassello  
per tipo "G"  
cod. : J 97 060



**Ganascia mobile 50**  
completa di sist. bloccaggio  
per tipo "A" - "C" - "F"  
cod. : J 97 053



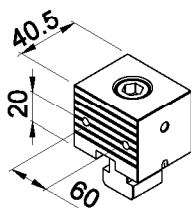
**Ganascia mobile 50 con scalini**  
completa di sist. bloccaggio  
per tipo "G"  
cod. : J 97 061



**Ganascia discendente 50**  
completa di viti e tassello  
per tipo "B"  
cod. : J 97 054



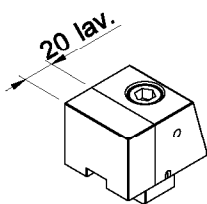
**Tassello 1 foro M10**  
per Ganascia discendente 50  
e Cuneo 50  
cod. : J 97 013



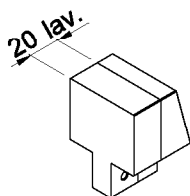
**Ganascia fissa 50 parallela**  
completa di viti e tassello  
per tipo "C"  
cod. : J 97 055



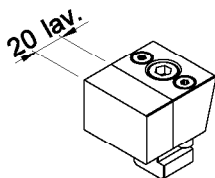
**Tassello 1 foro M12**  
per Ganascia fissa 50  
cod. : J 97 014



**Ganascia fissa 50**  
lavorabile  
completa di viti e tassello  
per tipo "D" - "E"  
cod. : J 97 056



**Ganascia mobile 50 lavorabile**  
completa di sist. bloccaggio  
per tipo "D"  
cod. : J 97 057



**Ganascia discendente 50**  
lavorabile  
completa di viti e tassello  
per tipo "E"  
cod. : J 97 058