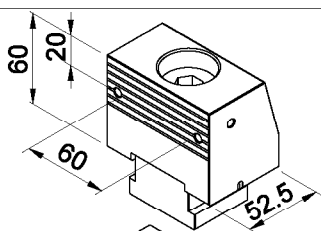
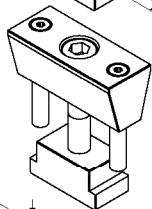


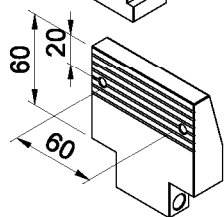
Parts for intense tightening vices 80 – 160



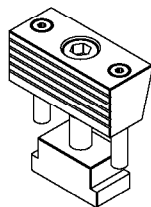
**Ganascia fissa 80 H60**  
Forte serraggio  
completa di vite e tassello  
per tipo "AW" - "BW" - "CW"  
cod. : J 94 071 W



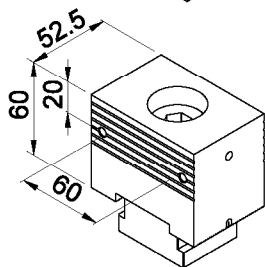
**Cuneo 80 H60**  
completo di viti e tassello  
per tipo "AW" - "CW"  
cod. : J 94 052 W



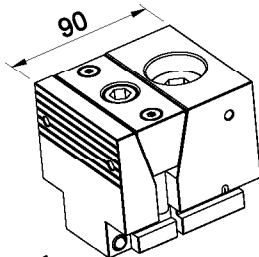
**Ganascia mobile 80 H60**  
completa di sist. bloccaggio  
per tipo "AW" - "CW"  
cod. : J 94 053 W



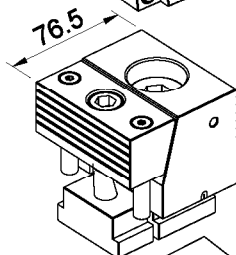
**Ganascia discendente 80 H60**  
completa di viti e tassello  
per tipo "BW"  
cod. : J 94 054 W



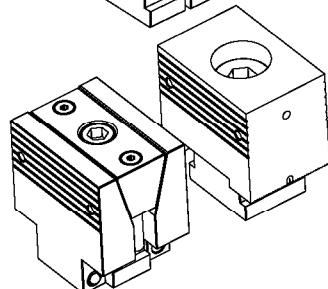
**Ganascia fissa 80 parallela H60**  
Forte serraggio  
completa di viti e tassello  
per tipo "CW"  
cod. : J 94 072 W



**Gruppo di spinta H 60**  
Tipo "A" (traslante)  
Forte serraggio  
cod. : J 80 001 AW



**Gruppo di spinta H 60**  
Tipo "B" (discendente)  
Forte serraggio  
cod. : J 80 001 BW



**Gruppo di spinta H 60**  
Tipo "C" (2x1)  
Forte serraggio  
cod. : J 80 001 CW