

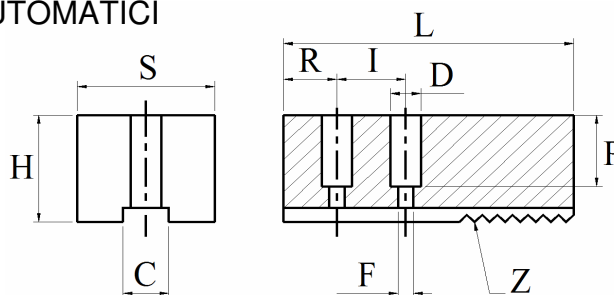
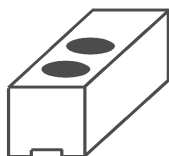
\* = versione con smussi

\* = version for bevels

## AUTOBLOK

Diam.	CODICE	L	H	S	C	I	F	R	i2	lam. D x P	Z		Kg
*	125-127 J10.01	60	30	30	12	16	9	16	-	14x 16	1/16"x90°		0,42
*	154-160 J10.02	75	35	35	14	16	11	16	-	17x 21	1/16"x90°		0,72
*	154-160 J10.02-1,5X60°	75	35	35	14	16	11	16	-	17x 21	1,5x60°		0,72
	154-160 J10.02-50	75	50	35	14	16	11	16	-	17x 36	1/16"x90°		1,02
	154-160 J10.02-60	75	60	35	14	16	11	16	-	17x 46	1/16"x90°		1,23
	154-160 J10.02-80	75	80	35	14	16	11	16	-	17x 66	1/16"x90°		1,64
*	170 J10.03	85	40	40	14	20	11	22	-	17x 26	1/16"x90°		1,06
*	200c 14 J10.04	95	40	40	14	20	11	20	-	17x 26	1/16"x90°		1,19
	200c 14 J10.04-60	95	60	40	14	20	11	20	-	17x 46	1/16"x90°		1,78
	200c 14 J10.04-80	95	80	40	14	20	11	20	-	17x 66	1/16"x90°		2,37
	200c 14 J10.04-100	95	100	40	14	20	11	20	-	17x 86	1/16"x90°		2,96
*	200c.17 J10.05	95	40	40	17	23	13	20	-	19x 26	1/16"x90°		1,19
	200-220 J10.05-50	95	50	40	17	23	13	20	-	19x 36	1/16"x90°		1,48
	200-220 J10.05-60	95	60	40	17	23	13	20	-	19x 46	1/16"x90°		1,78
	200-220 J10.05-80	95	80	40	17	23	13	20	-	19x 66	1/16"x90°		2,37
	200-220 J10.05-100	95	100	40	17	23	13	20	-	19x 86	1/16"x90°		2,96
*	210-220 J10.06-c17	105	40	40	17	23	13	20	-	19x 26	1/16"x90°		1,31
*	220 J10.06-c18	105	40	40	18	28	15	20	-	23x 26	1/16"x90°		1,31
*	250 J10.07	115	50	50	21	30	17	22	-	25x 36	1/16"x90°		2,24
*	250 J10.07-45	115	45	45	21	30	17	20	-	25x 31	1/16"x90°		1,82
	250-315 J10.07-c25,5	120	60	60	25,5	34	21	25	-	32x 46	1/16"x90°		3,37
	300-350 J10.08	130	50	50	21	30	17	22	-	25x 36	1/16"x90°		2,54
	300-350 J10.08-60	130	60	50	21	30	17	22	-	25x 46	1/16"x90°		3,04
	300-350 J10.08-80	130	80	50	21	30	17	22	-	25x 66	1/16"x90°		4,06
	300-350 J10.08-100	130	100	50	21	30	17	22	-	25x 86	1/16"x90°		5,07
	300-350 J10.08-120	130	120	50	21	30	17	22	-	25x 106	1/16"x90°		6,08
	300-350 J10.08-L150	150	50	50	21	30	17	22	-	25x 36	1/16"x90°		2,93
	400 J10.09	145	60	60	21	30	17	22	-	25x 46	1/16"x90°		4,07
	400 J10.09-80	145	80	60	21	30	17	22	-	25x 66	1/16"x90°		5,43
	400 J10.09-100	145	100	60	21	30	17	22	-	25x 86	1/16"x90°		6,79
	400 J10.09-120	145	120	60	21	30	17	22	-	25x 106	1/16"x90°		8,14

## PER MANDRINI AUTOMATICI



\* = versione con smussi

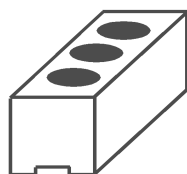
\* = version for bevells

### CMT SERIE k

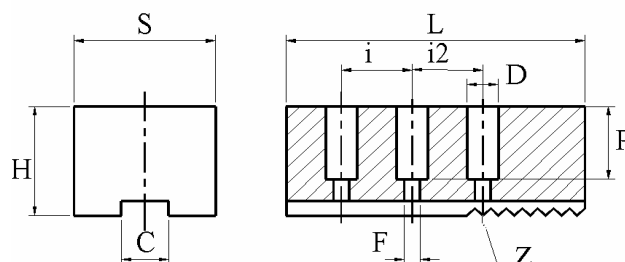
Diam.	CODICE	L	H	S	C	I	F	R	i2	lam. D x P	Z		Kg
150	J11.01	65	30	25	10	16	9	16	-	14x 16	1/16"x90°		0,38
*	200	J11.02	90	40	40	12	38	11	20	-	17x 26	1/16"x90°	1,12
*	250	J11.03	115	50	50	21	36	15	25	-	23x 36	1/16"x90°	2,24
*	315	J11.04	140	50	50	21	36	15	22	-	23x 36	1/16"x90°	2,73
*	400	J11.05	145	60	60	20	75	17	30	-	25x 46	1/16"x90°	4,07

### MPT CON DENTATURA (WITH TOOTHING)

Diam.	CODICE	L	H	S	C	I	F	R	i2	lam. D x P	Z		Kg
125	J12.01	60	30	30	12	13	9	16	-	14x 16	1/16"x90°		0,42
150	J12.02	70	35	35	14	16	11	16	-	17x 21	1/16"x90°		0,67
200	J12.03	90	50	40	17	22	13	20	-	19x 36	1/16"x90°		1,40
250	J12.04	110	50	50	21	28	17	22	-	25x 36	1/16"x90°		2,15
315/400	J10.09	145	60	60	21	30	17	22	-	25x 46	1/16"x90°		4,07



3 FORI



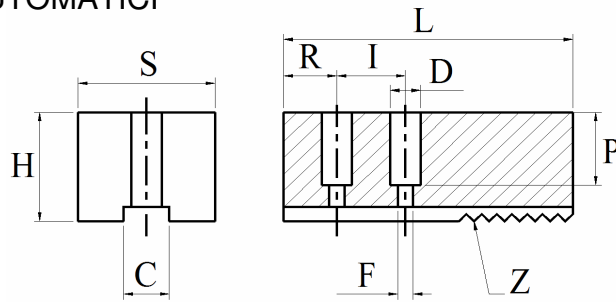
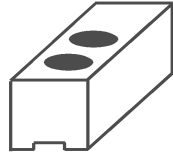
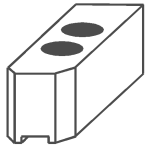
### FIAL CON DENTATURA (WITH TOOTHING)

Diam.	CODICE	L	H	S	C	I	F	R	i2	lam. D x P	Z		Kg
160	J13.01	73	35	20	8	19	7	16	19	11x 21	1/16"x90°		0,40
180/200	J13.02	90	40	25	10	23,8	9	18	23,8	14x 26	1/16"x90°		0,70
230	J13.03	105	40	25	10	28,5	9	20	28,5	14x 26	1/16"x90°		0,82
250/270	J13.04	120	50	30	12	33	11	20	33	17x 36	1/16"x90°		1,40
310/350	J13.05	140	60	30	14	36,5	13	20	36,5	19x 46	1/16"x90°		1,97

### GAMET TIPO "MAC"

Diam.	CODICE	L	H	S	C	I	F	R	i2	lam. D x P	Z		Kg
165	J14.01	75	30	30	14	20	11	16	20	17x 16	1/16"x90°		0,53
200	J14.02	95	35	35	17	25	13	18	25	19x 21	1/16"x90°		0,91
250	J14.03	119	45	45	21	32	17	20	32	25x 31	1/16"x90°		1,88
315	J14.04	150	45	45	21	38	17	22	38	25x 31	1/16"x90°		2,37
380	J14.05	182	55	55	25,5	42	21	30	42	32x 41	1/16"x90°		4,29

PER MANDRINI AUTOMATICI



\* = versione con smussi

\* = version for bevells

## GAMET TIPO "GA"

Diam.	CODICE	L	H	S	C	I	F	R	i2	lam. D x P	Z		Kg	
*	110	J15.01	50	25	25	10	12	7	15	-	11x 11	1/16"x90°		0,24
*	130-140	J15.02	58	25	25	11	15	9	16	-	14x 11	1/16"x90°		0,28
*	160-170	J15.03	72	35	35	14	18	11	16	-	17x 21	1/16"x90°		0,69
*	210	J15.04	93	35	35	17	20	13	20	-	19x 21	1/16"x90°		0,89
*	250	J15.05	110	45	45	21	26	17	20	-	25x 31	1/16"x90°		1,74
*	315	J15.06	140	45	45	21	31	17	25	-	25x 31	1/16"x90°		2,21

**AUTOBLOK** IDN125, GHDN125.

**BERG** KF130

**GEIGER+HAAG** GHGY120-130, GHGY160-200.

**HOFMANN** LK130, LK140

**ROHM** KDF130, KFH140.

**SMW** KDV130

diam.	CODICE	L	H	S	C	I	F	R	i2	lam. D x P	Z		Kg	
*	125	J10.01	60	30	30	12	16	9	16	-	14x 16	1/16"x90°		0,42

**AUTOBLOK** IDN170, HDB170, IDL170, HDN170, HDL170, GHDN165, GHD/FC165.

**GAMET** MAC165

diam.	CODICE	L	H	S	C	I	F	R	i2	lam. D x P	Z		Kg	
*	170	J10.03	85	40	40	14	20	11	22	-	17x 26	1/16"x90°		1,06

**BERG** KF160-200, HES160-200, KHFF200.

**FORDKART** 3KGH160-175-200, KTG160-200, 3KGHF160-165-200, KTN160-200, KS160-200-250, KL160-200, KSPS160-200, KSF175-200, 3KTGF200, KSHF200, UVE160-200-250, KP200, KG200, 3NHF200, 3NH200, KSH160-200, KLNC200.

**GAMET** MAC200, MAC220.

**GEIGER+HAAG** GHFA175, GHHFA200-250, GHN160-200, GHSH160-200, GHKS160-200-250, GH160-200, GHHL160-200-250, GHBF160-190-210-225, GHSP/GHHSP160-215, GH1250Mo.

**HOFMANN** LKL160-200-250, KHC160-200, KHC-B160-200-250

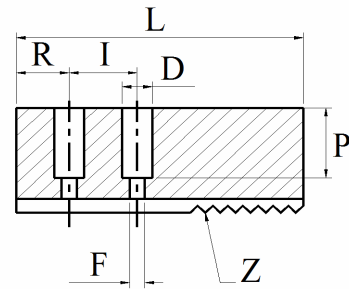
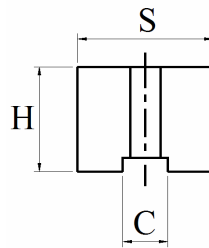
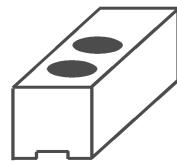
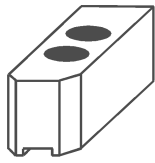
**ROHM** KFH160-200, KFH-NC160-200, KFH-F160-200, KFH-G160-200, KFD-HF160-200

KFD160-200, SPD160-215, SPO160-215

**SMW** HFKS160-200, KDV160-200, KDVG160-200-250

diam.	CODICE	L	H	S	C	I	F	R	i2	lam. D x P	Z		Kg	
	160	J16.01	70	60	40	17	22	13	18	-	19x 46	1/16"x90°		1,31

PER MANDRINI AUTOMATICI

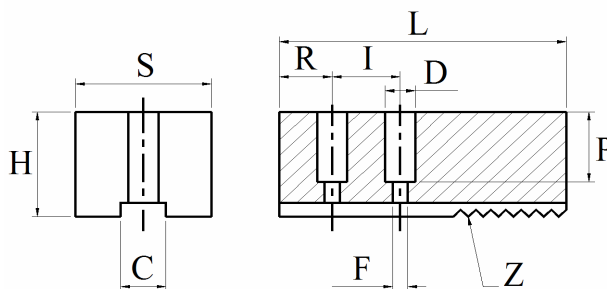
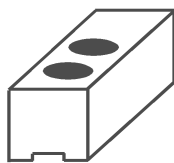


\* = versione con smussi  
\* = version for bevells

<b>BERG</b>	KF200, HES200, KHFF200												
<b>FORDKART</b>	3KGFH200,KTG200,3KGFHF200,KTN200,KS200-250,KSH200,KL200,KSF200 3KTGF200,KSHF200,UVE200-250,KG200,KSPS200,3NHF200,KSHF250-55index 3NH200,3NHF250-65index,3NHF290-104index,KL250Mo,KS250Mo,KLNC200,KP200												
<b>GAMET</b>	MAC200, MAC220.												
<b>GEIGER+HAAG</b>	GHHFA200-250, GHN200, GHSH200, GHKS200-250, GHL200, GHHL200-250, GHBF190-210-225, GHGY250-300, GHL250Mo, GHSP/GHHSP215												
<b>HOFMANN</b>	LKL200-250, KHC200, KHC-B200-250												
<b>ROHM</b>	KFH200, KFH-NC200, KFH-F200, KFH-G200, KFD-HF200, KFL250, SPD215, SPO215												
<b>SMW</b>	HF200, HF250, HF300, HF400, HF500, HF600, HF700, HF800, HF900, HF1000, HF1200, HF1500, HF1800, HF2000, HF2500, HF3000, HF3500, HF4000, HF4500, HF5000, HF5500, HF6000, HF6500, HF7000, HF7500, HF8000, HF8500, HF9000, HF9500, HF10000, HF10500, HF11000, HF11500, HF12000, HF12500, HF13000, HF13500, HF14000, HF14500, HF15000, HF15500, HF16000, HF16500, HF17000, HF17500, HF18000, HF18500, HF19000, HF19500, HF20000, HF20500, HF21000, HF21500, HF22000, HF22500, HF23000, HF23500, HF24000, HF24500, HF25000, HF25500, HF26000, HF26500, HF27000, HF27500, HF28000, HF28500, HF29000, HF29500, HF30000, HF30500, HF31000, HF31500, HF32000, HF32500, HF33000, HF33500, HF34000, HF34500, HF35000, HF35500, HF36000, HF36500, HF37000, HF37500, HF38000, HF38500, HF39000, HF39500, HF40000, HF40500, HF41000, HF41500, HF42000, HF42500, HF43000, HF43500, HF44000, HF44500, HF45000, HF45500, HF46000, HF46500, HF47000, HF47500, HF48000, HF48500, HF49000, HF49500, HF50000, HF50500, HF51000, HF51500, HF52000, HF52500, HF53000, HF53500, HF54000, HF54500, HF55000, HF55500, HF56000, HF56500, HF57000, HF57500, HF58000, HF58500, HF59000, HF59500, HF60000, HF60500, HF61000, HF61500, HF62000, HF62500, HF63000, HF63500, HF64000, HF64500, HF65000, HF65500, HF66000, HF66500, HF67000, HF67500, HF68000, HF68500, HF69000, HF69500, HF70000, HF70500, HF71000, HF71500, HF72000, HF72500, HF73000, HF73500, HF74000, HF74500, HF75000, HF75500, HF76000, HF76500, HF77000, HF77500, HF78000, HF78500, HF79000, HF79500, HF80000, HF80500, HF81000, HF81500, HF82000, HF82500, HF83000, HF83500, HF84000, HF84500, HF85000, HF85500, HF86000, HF86500, HF87000, HF87500, HF88000, HF88500, HF89000, HF89500, HF90000, HF90500, HF91000, HF91500, HF92000, HF92500, HF93000, HF93500, HF94000, HF94500, HF95000, HF95500, HF96000, HF96500, HF97000, HF97500, HF98000, HF98500, HF99000, HF99500, HF100000												
diam.	CODICE	L	H	S	C	I	F	R	i2	lam. D x P	Z		Kg
200	J16.02	90	60	40	17	22	13	20	-	19x 46	1/16"x90°		1,68

<b>BERG</b>	KF250-315, HES250-315, KHFF250-315												
<b>FORDKART</b>	KS315-400, KSH250-315-400, KG250-315, KP250-315, 3KTGF250-315 UVE315, KSHF250-315-400, KTG250-315, KLNC250-315, KTN250-315 3NHF250-315, 3NH250-315, 3NHF290, 3NHF400index, KL250, KSPS250-300												
<b>GAMET</b>	MAC250-315												
<b>GEIGER+HAAG</b>	GHN250-315, GHSH250-315, GHKS315, GHL250-280, GHHL280, GHSP/GHHSP300												
<b>HOFMANN</b>	LKL315-400, KHC250-315-400, KHC-B315-400												
<b>ROHM</b>	KFH250-315, KFH-NC250-315, KFH-F250-315, KFH-G250-315, KFD-HF250-315, KFD250-315, KFL315-400, LVE305, SPD300, SPO300												
<b>SMW</b>	HF250-315, HF250-400, HF250-500, HF250-600, HF250-700, HF250-800, HF250-900, HF250-1000, HF250-1200, HF250-1500, HF250-1800, HF250-2000, HF250-2500, HF250-3000, HF250-3500, HF250-4000, HF250-4500, HF250-5000, HF250-5500, HF250-6000, HF250-6500, HF250-7000, HF250-7500, HF250-8000, HF250-8500, HF250-9000, HF250-9500, HF250-10000, HF250-10500, HF250-11000, HF250-11500, HF250-12000, HF250-12500, HF250-13000, HF250-13500, HF250-14000, HF250-14500, HF250-15000, HF250-15500, HF250-16000, HF250-16500, HF250-17000, HF250-17500, HF250-18000, HF250-18500, HF250-19000, HF250-19500, HF250-20000, HF250-20500, HF250-21000, HF250-21500, HF250-22000, HF250-22500, HF250-23000, HF250-23500, HF250-24000, HF250-24500, HF250-25000, HF250-25500, HF250-26000, HF250-26500, HF250-27000, HF250-27500, HF250-28000, HF250-28500, HF250-29000, HF250-29500, HF250-30000, HF250-30500, HF250-31000, HF250-31500, HF250-32000, HF250-32500, HF250-33000, HF250-33500, HF250-34000, HF250-34500, HF250-35000, HF250-35500, HF250-36000, HF250-36500, HF250-37000, HF250-37500, HF250-38000, HF250-38500, HF250-39000, HF250-39500, HF250-40000, HF250-40500, HF250-41000, HF250-41500, HF250-42000, HF250-42500, HF250-43000, HF250-43500, HF250-44000, HF250-44500, HF250-45000, HF250-45500, HF250-46000, HF250-46500, HF250-47000, HF250-47500, HF250-48000, HF250-48500, HF250-49000, HF250-49500, HF250-50000, HF250-50500, HF250-51000, HF250-51500, HF250-52000, HF250-52500, HF250-53000, HF250-53500, HF250-54000, HF250-54500, HF250-55000, HF250-55500, HF250-56000, HF250-56500, HF250-57000, HF250-57500, HF250-58000, HF250-58500, HF250-59000, HF250-59500, HF250-60000, HF250-60500, HF250-61000, HF250-61500, HF250-62000, HF250-62500, HF250-63000, HF250-63500, HF250-64000, HF250-64500, HF250-65000, HF250-65500, HF250-66000, HF250-66500, HF250-67000, HF250-67500, HF250-68000, HF250-68500, HF250-69000, HF250-69500, HF250-70000, HF250-70500, HF250-71000, HF250-71500, HF250-72000, HF250-72500, HF250-73000, HF250-73500, HF250-74000, HF250-74500, HF250-75000, HF250-75500, HF250-76000, HF250-76500, HF250-77000, HF250-77500, HF250-78000, HF250-78500, HF250-79000, HF250-79500, HF250-80000, HF250-80500, HF250-81000, HF250-81500, HF250-82000, HF250-82500, HF250-83000, HF250-83500, HF250-84000, HF250-84500, HF250-85000, HF250-85500, HF250-86000, HF250-86500, HF250-87000, HF250-87500, HF250-88000, HF250-88500, HF250-89000, HF250-89500, HF250-90000, HF250-90500, HF250-91000, HF250-91500, HF250-92000, HF250-92500, HF250-93000, HF250-93500, HF250-94000, HF250-94500, HF250-95000, HF250-95500, HF250-96000, HF250-96500, HF250-97000, HF250-97500, HF250-98000, HF250-98500, HF250-99000, HF250-99500, HF300000												
diam.	CODICE	L	H	S	C	I	F	R	i2	lam. D x P	Z		Kg
250	J16.03	120	80	50	21	28	17	30	-	25x 66	1/16"x90°		3,74

<b>FORDKART</b>	KL300, KSHF560												
<b>GAMET</b>	MAC380												
<b>HOFMANN</b>	LK315, KHB400												
diam.	CODICE	L	H	S	C	I	F	R	i2	lam. D x P	Z		Kg
300	J16.04	140	90	60	25,5	35	21	35	-	32x 76	1/16"x90°		5,90



\* = versione con smussi  
\* = version for bevells

### ROHM

Diam.	CODICE	L	H	S	C	I	F	R	i2	lam. D x P	Z		Kg
110	J17.01	53	30	20	10	13	7	12	-	11x 16	1/16"x90°		0,25
130/140	J17.02	55	40	25	12	15	9	12	-	14x 26	1/16"x90°		0,43
160/170	J17.03	80	50	35	17	20	13	18	-	19x 36	1/16"x90°		1,09
200	J17.04	95	50	35	17	20	13	20	-	19x 36	1/16"x90°		1,30
250	J17.05	110	50	50	21	26	17	20	-	25x 36	1/16"x90°		2,15
315	J17.06	120	80	50	21	28	17	20	-	25x 66	1/16"x90°		3,74

### ROHM LVE

Diam.	CODICE	L	H	S	C	I	F	R	i2	lam. D x P	Z		Kg
160	J18.01	80	40	30	13	18	9	18	-	14x 26	1/16"x90°		0,75
200	J18.02	95	50	35	17	22	11	20	-	17x 36	1/16"x90°		1,30
250	J18.03	110	50	50	21	25	13	20	-	19x 36	1/16"x90°		2,15
315	J18.04	130	50	50	21	30	13	25	-	19x 36	1/16"x90°		2,54

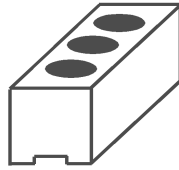
### BERG KH

Diam.	CODICE	L	H	S	C	I	F	R	i2	lam. D x P	Z		Kg
110	J19.01	55	40	25	8	14	9	12	-	14x 26	1/16"x90°		0,43
140-160	J19.02	70	45	30	10	19	11	15	-	17x 31	1/16"x90°		0,74
175-200	J19.03	84	45	30	12	21	13	20	-	19x 31	1/16"x90°		0,88
175-200	J19.04	90	60	30	12	21	13	15	-	19x 46	1/16"x90°		1,26
250-315	J19.05	111	60	40	16	29	17	25	-	25x 46	1/16"x90°		2,08

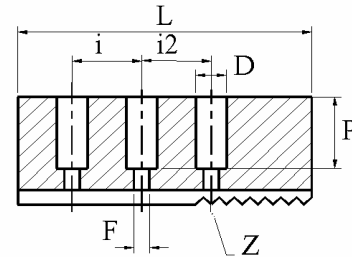
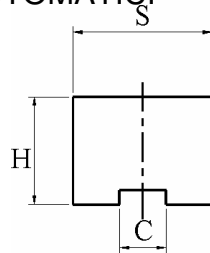
### SMW SP-STP-STWP-LP-bb

Diam.	CODICE	L	H	S	C	I	F	R	i2	lam. D x P	Z		Kg
125	J20.01	68	40	30	11	18	9	18	-	14x 26	1/16"x90°		0,64
160	J20.02	88	50	35	14	25	11	20	-	17x 36	1/16"x90°		1,20
200	J20.03	98	50	40	17	29	13	20	-	19x 36	1/16"x90°		1,53
250	J20.04	108	70	50	21	30	15	22	-	23x 56	1/16"x90°		2,95
315	J20.05	120	70	50	21	30	17	25	-	25x 56	1/16"x90°		3,28

PER MANDRINI AUTOMATICI



3 FORI

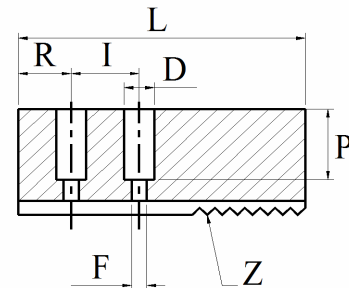
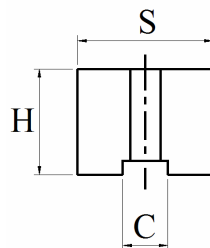
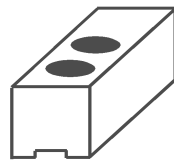
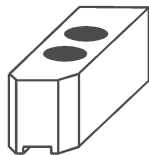


\* = versione con smussi

\* = version for bevells

**GAMET- NIKKO- ROHM**

Diam.	CODICE	L	H	S	C	I	F	R	i2	lam. D x P	Z		Kg
105	J21.01	55	30	25	10	15	9	15	-	14x 16	1,5 x 60°		0,32
130	J21.02	65	30	25	11	22	9	16	-	14x 16	1,5 x 60°		0,38
160	J21.03	77	35	35	11	20	9	18	-	14x 21	1,5 x 60°		0,74
215	J21.04	102	45	45	14	22	11	20	22	17x 31	1,5 x 60°		1,61
250-280	J21.05	125	50	50	20	30	13	25	30	19x 36	1,5 x 60°		2,44
350	J21.06	170	60	50	21	40	17	35	40	25x 46	1,5 x 60°		3,98
450	J21.07	220	80	70	30	50	21	50	50	32x 66	1,5 x 60°		9,61



**HOWA**

H01MA4

**KITAGAWA**

N04-HJ-4 AS 110

Diam.	CODICE	L	H	S	C	I	F	R	i2	lam. D x P	Z		Kg
110	J22.01	55	25	25	10	14	9	14	-	14x 11	1,5 x 60°		0,27
110	J22.02	55	50	25	10	14	9	14	-	14x 36	1,5 x 60°		0,54

**HOWA**

H01MA5

**KITAGAWA**

HJ-5 N05

Diam.	CODICE	L	H	S	C	I	F	R	i2	lam. D x P	Z		Kg
135	J22.03	55	25	25	10	19	9	14	-	14x 11	1,5 x 60°		0,27
135	J22.04	55	40	25	10	19	9	14	-	14x 26	1,5 x 60°		0,43

**HOWA**

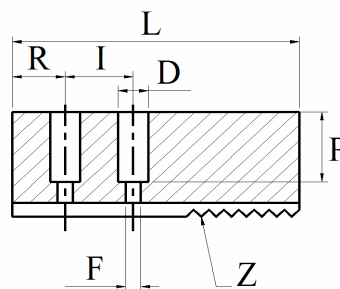
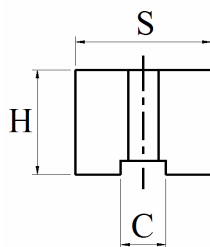
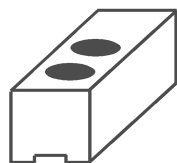
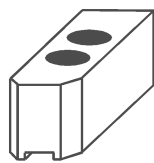
H027M4 H027M5

Diam.	CODICE	L	H	S	C	I	F	R	i2	lam. D x P	Z		Kg
* 110/135	J22.05	50	25	25	11	16	9	14	-	14x 11	1,5 x 60°		0,24

**HOWA**

H09 17M5

Diam.	CODICE	L	H	S	C	I	F	R	i2	lam. D x P	Z		Kg
135	J22.06	60	25	25	11	19	9	16	-	14x 11	1,5 x 60°		0,29



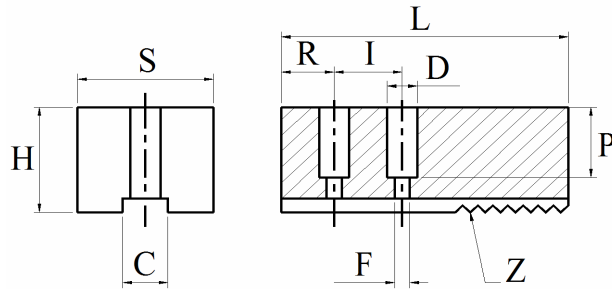
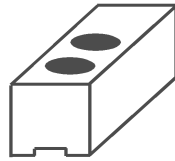
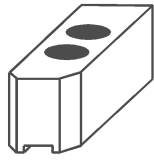
\* = versione con smussi  
\* = version for bevells

AUTOBLOCK		AN-M165	AL-M165	BH-M165										
HOWA		H01MA6	H07MA6	H015M6	H022M6	H024M6	H027M6	H047M6						
KITAGAWA		HJA 5-6	H0S6	AS165	B160	N160	H0H160	H0B-6	B206A5	H0-6				
Diam.	CODICE	L	H	S	C	I	F	R	i2	lam. D x P	Z		Kg	
165	J22.07	80	30	30	12	20	11	14	-	17x 16	1,5 x 60°		0,56	
165	J22.08	75	40	30	12	20	11	20	-	17x 26	1,5 x 60°		0,70	
165	J22.09	75	50	30	12	20	11	20	-	17x 36	1,5 x 60°		0,88	
165	J22.10	75	60	30	12	20	11	20	-	17x 46	1,5 x 60°		1,05	

AUTOBLOCK		AN-M210	AL-M210	BH-M210										
HOWA		H07MA8	H015M8	H023M8										
KITAGAWA		B200	N200	AS210	H0S-8	HJA6-8	H0-8B208A6	H0B-8	HOH200					
MATSUMOTO		HA6-8	HX6	H8	HH8	HJ8	HHJ8	STC8						
Diam.	CODICE	L	H	S	C	I	F	R	i2	lam. D x P	Z		Kg	
210	J22.12	95	40	35	14	25	13	20	-	19x 26	1,5 x 60°		1,04	
*	J22.13	95	40	40	14	25	13	20	-	19x 26	1,5 x 60°		1,19	
210	J22.14	95	50	40	14	25	13	20	-	19x 36	1,5 x 60°		1,48	
210	J22.15	95	60	40	14	25	13	20	-	19x 46	1,5 x 60°		1,78	
210	J22.16	95	80	40	14	25	13	20	-	19x 66	1,5 x 60°		2,37	
210	J22.16 H100	95	100	40	14	25	13	20	-	19x 86	1,5 x 60°		2,96	

HOWA		H027M8+E250	H022M8	H047M8	H024M8	H07MA10	H015M10	H023M10						
Diam.	CODICE	L	H	S	C	I	F	R	i2	lam. D x P	Z		Kg	
*	210-254 J22.17	95	40	40	16	25	13	24	-	19x 26	1,5 x 60°		1,19	
	210-254 J22.18	95	50	40	16	25	13	24	-	19x 36	1,5 x 60°		1,48	
	210-254 J22.19	95	60	40	16	25	13	24	-	19x 46	1,5 x 60°		1,78	
	210-254 J22.20	95	80	40	16	25	13	24	-	19x 66	1,5 x 60°		2,37	

HOWA		H027M10	H047M10										
Diam.	CODICE	L	H	S	C	I	F	R	i2	lam. D x P	Z		Kg
*	254 J22.21	110	40	40	18	30	15	30	-	23x 26	1,5 x 60°		1,37



\* = versione con smussi  
\* = version for bevells

HOWA		H07MA12	H015M12	H022M10	H023M12	H024M10								
KITAGAWA		B300	H0H300	N300	H0S-12	H012	HJA8-12	HLA6-12	HJA6-12	H0B12	HLA6-15	HLA8-15		
MATSUMOTO		HAB12	HX12	H12	SH12	HH12	HHL12	HJ12	HHJ12					
Diam.	CODICE	L	H	S	C	I	F	R	i2	lam. D x P	Z		Kg	
*	304	J22.22	130	50	50	18	30	15	40	-	23x 36	1,5 x 60°		2,54
	304	J22.23	130	60	50	18	30	15	40	-	23x 46	1,5 x 60°		3,04
	304	J22.24	130	80	50	18	30	15	40	-	23x 66	1,5 x 60°		4,06
	304	J22.25	130	100	50	18	30	15	40	-	23x 86	1,5 x 60°		5,07

HOWA		H027M12	H047M12											
Diam.	CODICE	L	H	S	C	I	F	R	i2	lam. D x P	Z		Kg	
	304	J22.26	130	50	50	21	35	17	30	-	25x 36	1,5 x 60°		2,54

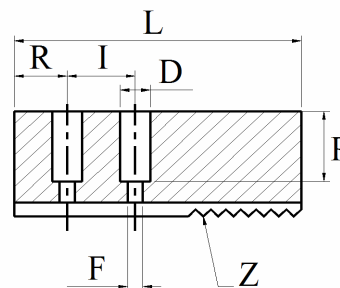
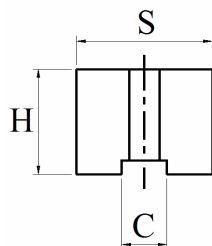
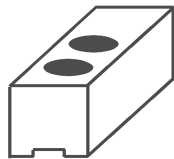
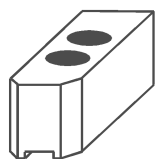
KITAGAWA		H0B-4	B-04											
Diam.	CODICE	L	H	S	C	I	F	R	i2	lam. D x P	Z		Kg	
	110	J23.01	50	25	20	8	15	7	16	-	11x 11	1,5 x 60°		0,20

KITAGAWA		H0B-5	B-05											
Diam.	CODICE	L	H	S	C	I	F	R	i2	lam. D x P	Z		Kg	
	135	J23.02	55	30	25	10	18	9	10	-	14x 16	1,5 x 60°		0,32
	135	J23.03	55	40	25	10	18	9	10	-	14x 26	1,5 x 60°		0,43

AUTOBLOCK		AN-M250	AL-M250	BH-M250										
KITAGAWA		B250	HOH250	B210-A6-A8	H0B-10	AS250	N250HJA6-10	HJA8-10	H05-10	H0-10				
MATSUMOTO		HA6-10	HA8-10	HX10	H10	HH10	HHL10	HJ10	HHJ10	STC10	HA8-11			
Diam.	CODICE	L	H	S	C	I	F	R	i2	lam. D x P	Z		Kg	
*	254	J23.04	110	40	40	16	30	13	22	-	19x 26	1,5 x 60°		1,37
	254	J23.05	110	60	40	16	30	13	22	-	19x 46	1,5 x 60°		2,06
	254	J23.06	110	80	40	16	30	13	22	-	19x 66	1,5 x 60°		2,75
	254	J23.06 H100	110	100	40	16	30	13	22	-	19x 86	1,5 x 60°		3,43

AUTOBLOCK		AN-M315	AL-M315	BH-M315										
KITAGAWA		B212	A8											
Diam.	CODICE	L	H	S	C	I	F	R	i2	lam. D x P	Z		Kg	
*	304	J23.07	130	50	50	21	30	17	40	-	25x 36	1,5 x 60°		2,54
	304	J23.11	130	80	50	21	30	17	40	-	25x 66	1,5 x 60°		4,06
	304	J23.12	130	100	50	21	30	17	40	-	25x 86	1,5 x 60°		5,07





\* = versione con smussi

\* = version for bevells

KITAGAWA		B380 H0H380	H0B-15/B450 HOB-18											
Diam.	CODICE	L	H	S	C	I	F	R	i2	lam. D x P	Z		Kg	
381-454	J23.08	165	70	70	22	43	21	30	-	32x 56	1,5 x 60°		6,31	

KITAGAWA		HJ380 HJA11-15	HJA8-18 HLA8-18			HJA8-21 HLA8-21							
Diam.	CODICE	L	H	S	C	I	F	R	i2	lam. D x P	Z		Kg
381-454-530	J23.09	156	70	70	22	60	21	50	-	32x 56	1,5 x 60°		5,96

KITAGAWA		N15A8											
Diam.	CODICE	L	H	S	C	I	F	R	i2	lam. D x P	Z		Kg
381	J23.10	135	60	50	25,5	43	21	30	-	32x 46	1,5 x 60°		3,16

MATSUMOTO		HA5-6 HX6	H6 HH6		HJ6 STC6								
Diam.	CODICE	L	H	S	C	I	F	R	i2	lam. D x P	Z		Kg
165	J24.01	75	45	30	11	20	9	16	-	14x 31	1,5 x 60°		0,79