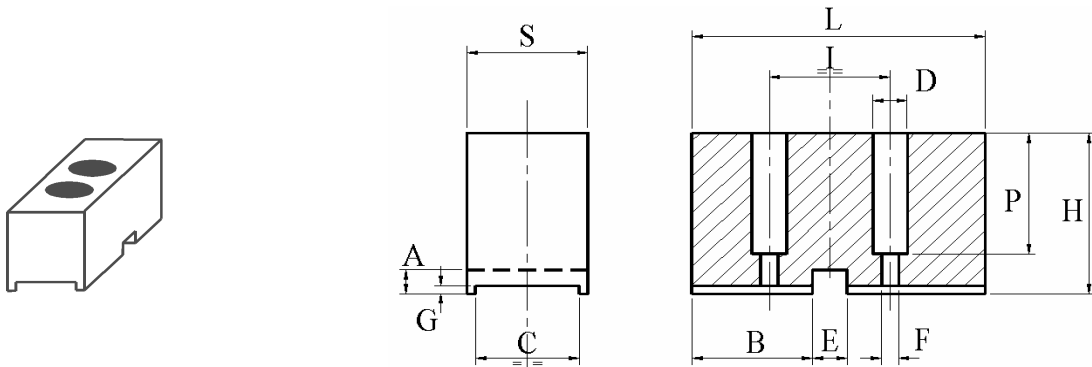


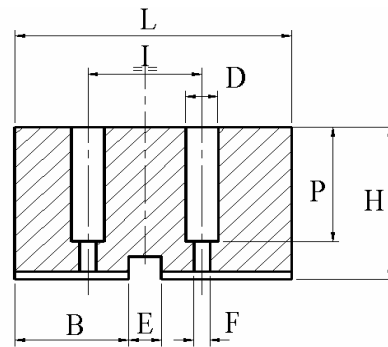
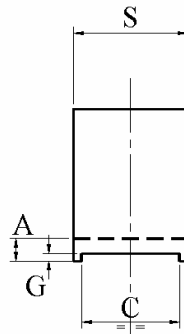
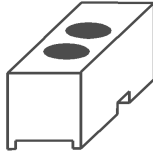
## PER MANDRINI MANUALI



MPT		MANUALE														
Diam.	CODICE	L	H	S	C	I	F	A	B	E	G	lam. D x P			Kg	
105	J25,01	55	20	20	12	25	7	6,5	20	9	2,5	11x 6			0,16	
130	J25,02	70	25	20	16	36	7	6,5	30	9	2,5	11x 11			0,25	
160	J25,03	80	35	25	18	40	7	6,5	35	9	2,5	11x 21			0,49	
180-200	J25,04	100	40	30	20	53	9	9	35	10	3	14x 26			0,85	
230-250	J25,05	110	40	30	22	62	9	9	42	11	3	14x 26			0,93	
270	J25,06	120	60	30	25	68	11	9	45	11	3	17x 46			1,53	
310	J25,07	135	60	35	28	76	13	9	52	12	3,5	19x 46			2,00	
350-380	J25,08	160	60	40	30	92	13	9	60	12	3,5	19x 46			2,71	
430	J25,09	190	70	50	36	120	13	9	65	12	3,5	19x 56			4,70	
510	J25,10	220	80	50	40	120	13	9	75	12	3,5	19x 66			6,22	
600	J25,11	250	90	55	46	130	13	9	85	12	3,5	19x 76			8,74	

ROTOMORS AM-AT																
Diam.	CODICE	L	H	S	C	I	F	A	B	E	G	lam. D x P			Kg	
200	J25,12	100	35	35	30	50	11	6,5	35	12	2,5	17x 21			0,87	
230	J25,13	110	35	35	30	50	11	6,5	42	12	2,5	17x 21			0,95	
270	J25,14	120	35	35	30	70	11	6,5	45	12	2,5	17x 21			1,04	
310	J25,15	140	50	50	40	70	13	9	52	12	3	19x 36			2,47	
350	J25,16	150	50	50	40	80	17	9	58	12	3	25x 36			2,65	
400	J25,17	170	60	60	40	90	17	9	62	12	3	25x 46			4,32	

ROTOMORS PN-RA																
Diam.	CODICE	L	H	S	C	I	F	A	B	E	G	lam. D x P			Kg	
160	J25,18	70	35	35	27	36	9	6,5	30	12	2,5	14x 21			0,61	
180	J25,19	75	35	35	27	36	9	6,5	30	12	2,5	14x 21			0,65	
200	J25,20	80	40	40	32	40	11	9	32	12	3	17x 26			0,90	
220	J25,21	85	40	40	35	40	11	9	34	12	3	17x 26			0,96	
250	J25,22	100	55	55	45	54	13	9	35	12	3	19x 41			2,14	
300	J25,23	130	55	55	45	65	15	9	42	12	3	23x 41			2,78	



## TRIBLOC"VECCHIO"

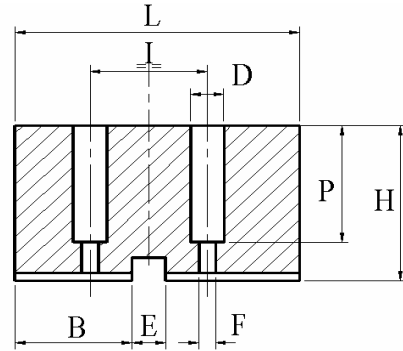
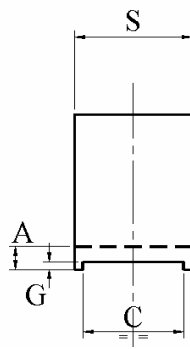
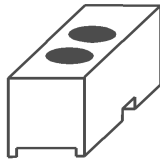
Diam.	CODICE	L	H	S	C	I	F	A	B	E	G	lam. D x P		Kg
160	J25,24	70	40	30	22	26	9	6,5	20	10	2,5	14x 26		0,59
175/200/225	J25,25	95	50	30	22	26	9	9	25	10	3,5	14x 36		1,01
250	J25,26	105	50	35	26	30	11	9	35	10	3,5	17x 36		1,30
275	J25,27	105	50	35	26	30	11	9	35	12	3,5	17x 36		1,30
300	J25,28	120	60	35	26	36	11	9	40	12	3,5	17x 46		1,78
375	J25,29	130	70	40	32	42	13	9	40	16	3,5	19x 56		2,57

## TRIBLOC"NUOVO"

Diam.	CODICE	L	H	S	C	I	F	A	B	E	G	lam. D x P		Kg
130	J25,30	60	30	20	15	20	7	6,5	16	6	2,5	11x 16		0,25
160	J25,31	70	30	20	15	20	7	6,5	20	6	2,5	11x 16		0,30
175	J25,32	80	40	30	20	26	9	6,5	25	10	2,5	14x 26		0,68
200	J25,33	95	50	30	20	26	9	9	28	10	3,5	14x 36		1,01
225	J25,34	95	50	30	20	26	11	9	28	10	3,5	17x 36		1,01
250/275	J25,35	115	50	35	25	32	11	9	30	12	3,5	17x 36		1,42
300	J25,36	130	50	35	25	32	11	9	40	12	3,5	17x 36		1,61
375	J25,29	130	70	40	32	42	13	9	40	16	3,5	19x 56		2,57

## TRIBLOC"NUOVISSIMO"

Diam.	CODICE	L	H	S	C	I	F	A	B	E	G	lam. D x P		Kg
100	J25,37	50	30	20	12	20	7	6,5	15	6	2,5	11x 16		0,21
125/160	J25,38	70	30	25	16	20	9	6,5	20	6	2,5	14x 16		0,37
175-200	J25,39	90	45	30	19	26	9	6,5	28	8	2,5	14x 31		0,86
225-250	J25,40	110	50	30	22	32	11	9	35	10	3,5	17x 36		1,17
275-315	J25,41	130	60	35	27	38	13	9	40	12	3,5	19x 46		1,93
350-400	J25,42	160	70	50	32	48	17	9	46	16	3,5	25x 56		3,96
450	J25,43	200	80	50	38	60	17	9	52	16	3,5	25x 66		5,65



FORDKART "F"		F80												
Diam.	CODICE	L	H	S	C	I	F	A	B	E	G	lam. D x P		Kg
80	J25,44	38	25	15	9	16	6	6,5	15	4	2,5	11x 11		0,10

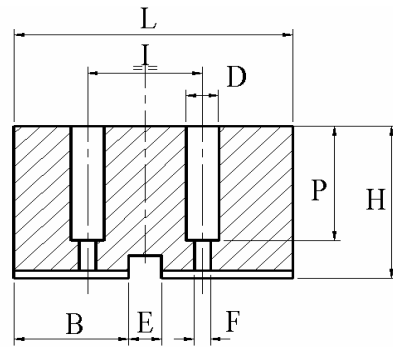
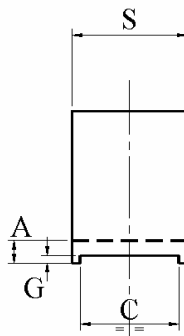
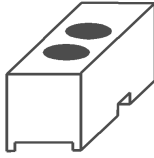
FORDKART "F"		F100												
Diam.	CODICE	L	H	S	C	I	F	A	B	E	G	lam. D x P		Kg
100	J25,45	46	30	20	11	19	6	6,5	18	5	2,5	11x 16		0,19

FORDKART "F"		F125												
REISHAUER		RHU125												
ROHM		DURO 125												
SMW		RGM125												
Diam.	CODICE	L	H	S	C	I	F	A	B	E	G	lam. D x P		Kg
125	J25,46	55	30	20	14	20	7	6,5	20	5	2,5	11x 16		0,23

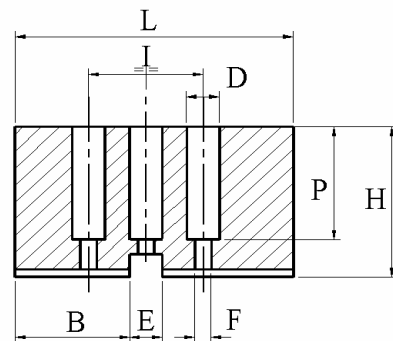
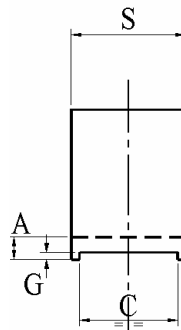
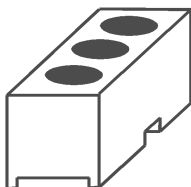
TOS														
Diam.	CODICE	L	H	S	C	I	F	A	B	E	G	lam. D x P		Kg
160	J25,47	80	35	25	18	38	7	6,5	28	12	2,5	11x 21		0,49
200	J25,48	100	40	30	22	48	11	9	35	14	3,5	17x 26		0,85
250	J25,49	125	40	30	25	55	11	9	40	14	3,5	17x 26		1,06
315	J25,50	155	60	40	32	60	13	9	50	20	3,5	19x 46		2,63
400	J25,51	165	70	40	32	70	13	9	55	20	3,5	19x 56		3,26

KENNON COREANO														
Diam.	CODICE	L	H	S	C	I	F	A	B	E	G	lam. D x P		Kg
200	J25,52	100	40	30	13	56	11	6,5	35	13	2,5	17x 26		0,85
250	J25,53	120	50	30	13	70	11	9	40	13	3,5	17x 36		1,27
320	J25,54	140	60	40	16	88	13	9	48	16	3,5	19x 46		2,37
400	J25,55	180	70	40	16	100	13	9	50	16	3,5	19x 56		3,56

## PER MANDRINI MANUALI

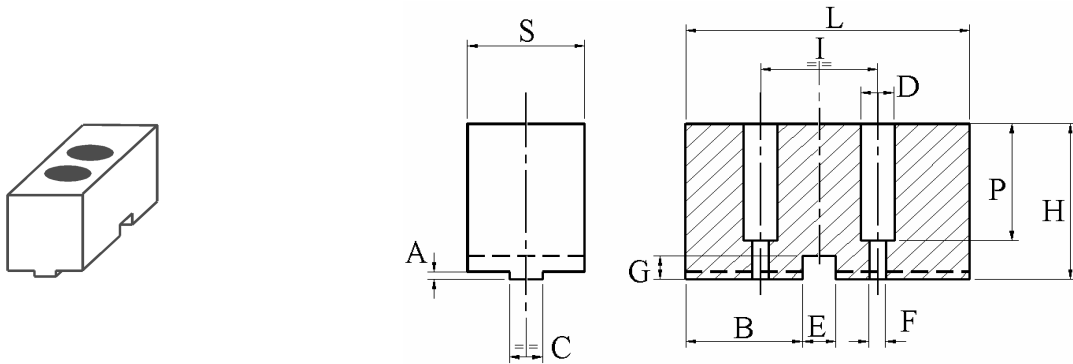


MPT		AUTOMATICO												
Diam.	CODICE	L	H	S	C	I	F	A	B	E	G	lam. D x P		Kg
130	J26,01	60	30	30	24	30	9	6,5	20	12	2,5	14x 16		0,38
160	J26,02	80	40	30	24	37	9	6,5	25	18	2,5	14x 26		0,68
200	J26,03	95	50	35	30	44	9	9	30	18	3,5	14x 36		1,17
230	J26,04	105	45	45	33,5	50	11	9	35	18	3,5	17x 31		1,50
250	J26,05	115	50	50	37,5	54	11	9	40	18	3,5	17x 36		2,03
300/350	J26,06	130	55	55	45	65	13	9	50	18	3,5	19x 41		2,78
400	J26,07	170	55	55	45	65	13	9	60	18	3,5	19x 41		3,63

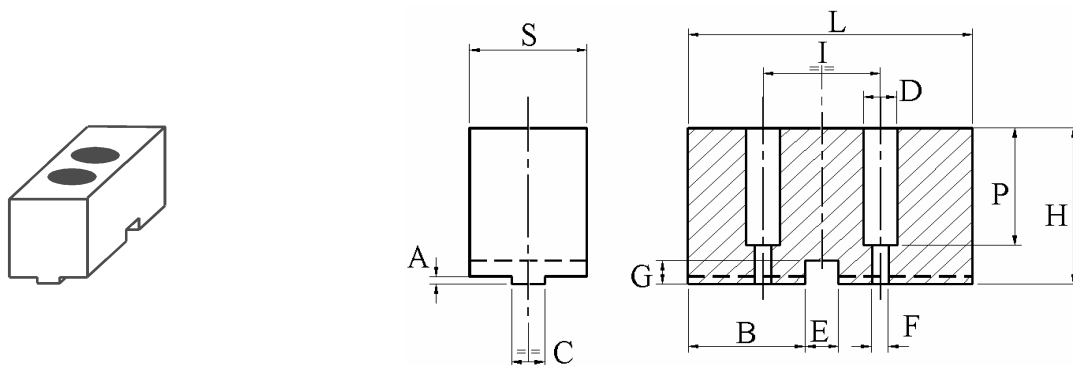


MPT		A PIANI INCLINATI												
Diam.	CODICE	L	H	S	C	I	F	A	B	E	G	lam. D x P		Kg
125	J27,01	60	35	35	30	28	9	6,5	20	12	2,5	14x 21		0,52
160	J27,02	70	40	40	35	28	9	6,5	22	12	2,5	14x 26		0,79
200	J27,03	90	50	50	40	40	11	9	28	18	3,5	17x 36		1,59
250	J27,04	110	55	55	45	50	13	9	38	18	3,5	19x 41		2,35
315	J27,05	140	60	60	50	50	13	9	52	18	3,5	19x 46		3,56
400	J27,06	170	70	70	57	70	17	9	60	32	3,5	25x 56		5,89
500	J27,07	200	80	80	65	70	17	9	70	32	3,5	25x 66		9,04
630	J27,08	250	90	90	75	90	21	9	80	32	3,5	32x 76		14,31

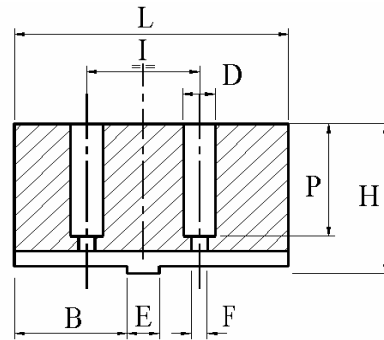
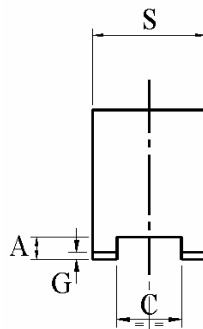
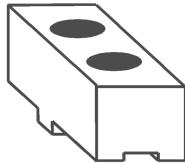
PER MANDRINI MANUALI



FIAL		MANUALE													
Diam.	CODICE	L	H	S	C	I	F	A	B	E	G	lam. D x P		Kg	
85	J28,01	47	25	15	8	19	5	2	15	12	9	9x 11		0,12	
105	J28,02	53	25	15	8	19	6	2	18	12	9	10x 11		0,14	
130	J28,03	62	30	20	10	22,2	7	2	22	14	9	11x 16		0,26	
160	J28,04	72	35	20	10	33,5	9	2	27	20	9	14x 21		0,36	
190-200	J28,05	85	40	25	10	33,5	9	2	32,5	20	9	14x 26		0,60	
230	J28,06	100	40	25	10	39,2	9	2	38	20	9	14x 26		0,71	
250-270	J28,07	110	50	30	12	45,5	9	2	44	22	9	14x 36		1,17	
310-350	J28,08	130	60	30	14	61	13	2	50	28	9	19x 46		1,65	
400/480	J28,09	180	70	40	16	91	13	2	60	32	9	19x 56		3,56	



ROTOMORS PN-ID															
Diam.	CODICE	L	H	S	C	I	F	A	B	E	G	lam. D x P		Kg	
160	J29,01	70	35	35	10,5	36	9	2	25	18	9	14x 21		0,61	
180-200	J29,02	80	35	35	10,5	36	9	2	30	18	9	14x 21		0,69	
220	J29,03	85	40	40	13	36	9	2	32	18	9	14x 26		0,96	
250	J29,04	100	55	55	16	40	13	2	38	18	9	19x 41		2,14	
300-400	J29,05	120	55	55	16	54	15	2	42	26	9	23x 41		2,56	



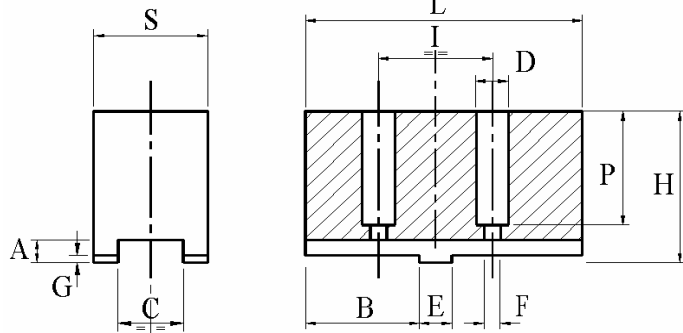
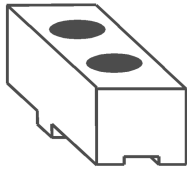
FIAL KENNON		SOGIMUT VEPRUG												
Diam.	CODICE	L	H	S	C	I	F	A	B	E	G	lam. D x P		Kg
160	J30,01	74	45	30	7,96	38,1	11	9	25	12,7	4	17x 31		0,71
200	J30,02	87	45	30	7,96	44,4	11	9	30	12,7	4	17x 31		0,83
250	J30,03	103	50	35	12,7	54	13	9	35	19	4	19x 36		1,27
315	J30,04	120	60	40	12,7	63,5	13	9	40	19	4	19x 46		2,03
400	J30,05	140	70	50	12,7	76,2	17	9	45	19	4	25x 56		3,46
500	J30,06	160	80	50	12,7	76,2	21	9	50	19	4	32x 66		4,52

ROHM SMW		DURO-NC140 KNCS140												
Diam.	CODICE	L	H	S	C	I	F	A	B	E	G	lam. D x P		Kg
140	J30,07	69	40	20	8	32	9	9	22	18	4	14x 26		0,39

BERG FORDKART "F" REISHAUER ROHM SMW		KHNC160 KHNC185 F160, KTNC160, KTNCV175 RHU160 DURO160, DURO-NC160, DURO-NCE160 RMG160, HG160, KNSP160, KNCS160, KNCS175												
Diam.	CODICE	L	H	S	C	I	F	A	B	E	G	lam. D x P		Kg
160	J30,08	85	40	20	8	32	9	9	30	18	4	14x 26		0,48

BERG FORDKART "F" REISHAUER ROHM SMW		KHNC200 F200, KTNC200, KTNCV200 RHU200 DURO200, DURO-NC200, DURO-NCE200 RMG200, HG200, KNSP200, KNCS200, KNCS200												
Diam.	CODICE	L	H	S	C	I	F	A	B	E	G	lam. D x P		Kg
200	J30,09	105	50	25	10	40	9	9	35	20	4	14x 36		0,93

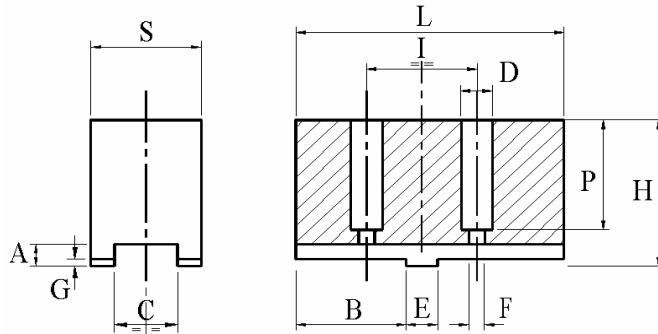
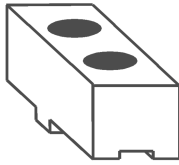
PER MANDRINI MANUALI



<b>BERG</b>		KHNC250, KHNC315												
<b>FORDKART "F"</b>		F250, UNC250/315, KTNC250, KTNCV250, KTNC265												
		KNTC280, KNTC315, KTNCV315												
<b>REISHAUER</b>		RHU250												
<b>ROHM</b>		DURO250, DURO-NC250, DURO-NCE250, DURO-NCE315												
<b>SMW</b>		RMG250, HG250, HG315, KNCS250, KNCS260, KNCS315												
Diam.	CODICE	L	H	S	C	I	F	A	B	E	G	lam. D x P		Kg
250	J30,10	125	50	30	12	40	13	9	70	20	4	19x 36		1,32

<b>BERG</b>		KHNC400												
<b>FORDKART "F"</b>		F315, UNC400, KTNC360, KTNC400, KTNCV400												
<b>REISHAUER</b>		RHU315												
<b>ROHM</b>		DURO315, DURO-NC315, DURO-NCE400												
<b>SMW</b>		RMG315, HG400, KNCS400												
Diam.	CODICE	L	H	S	C	I	F	A	B	E	G	lam. D x P		Kg
315	J30,11	145	60	35	12	54	13	9	70	26	4	19x 46		2,15

<b>BERG</b>		KHNC500												
<b>FORDKART "F"</b>		F400/500, UNC500, KTNC500, KTNC630, KTNCV500, KTNCV630												
<b>ROHM</b>		DURO400, DURO-NC400, DURO500, DURO-NC500, DURO-NCE500												
<b>SMW</b>		HG500, HG630, KNCS500, KNCS630												
Diam.	CODICE	L	H	S	C	I	F	A	B	E	G	lam. D x P		Kg
400	J30,12	180	80	50	18	60	17	10	80	30	5	25x 66		5,09



FORDKART "F"		F500												
Diam.	CODICE	L	H	S	C	I	F	A	B	E	G	lam. D x P		Kg
500	J30,13	180	80	50	18	76	17	10	80	40	5	25x 66		5,09

FORDKART "F"		F630												
Diam.	CODICE	L	H	S	C	I	F	A	B	E	G	lam. D x P		Kg
630	J30,14	260	120	60	24	82	21	10	100	40	5	32x 106		13,23

ROHM MANUALE																
Diam.	CODICE	L	H	S	C	I	F	A	B	E	G	lam. D x P		Kg		
100	J30,15	53	30	25	7,96	24	7	9	15	9,49	4	11x 16		0,28		
125	J30,16	62	40	25	7,96	32	9	9	20	12,7	4	14x 26		0,44		
160	J30,17	74	45	30	7,96	38,1	9	9	25	12,7	4	14x 31		0,71		
200	J30,18	87	45	30	7,96	44,4	9	9	30	12,7	4	14x 31		0,83		
250	J30,03	103	50	35	12,7	54	13	9	35	19	4	19x 36		1,27		
315	J30,04	120	60	40	12,7	63,5	13	9	40	19	4	19x 46		2,03		
350-400	J30,05	140	70	50	12,7	76,2	17	9	45	19	4	25x 56		3,46		
450-800	J30,06	160	80	50	12,7	76,2	21	9	50	19	4	32x 66		4,52		